

MODULAR LABS & CLEANROOMS

Sized to suit your space requirements, pre-engineered for prompt on site assembly. Equipped with HVAC system, lighting & electrical service to specs. HEPA filtered supply air to suit your modular clean lab applications.



HEMCO pre-engineered modular construction for prompt on-site assembly to meet lab space requirements, easily expanded and relocated to suit future Lab Planning needs providing space and energy savings, Now and in the future.

HEMCO
ISO 9001:2015 Certified Company

UNILAB MODULAR CLEAN LABS

UNILAB MODULAR CLEAN LABS

UNILAB MODULAR CLEAN LABS

UNILAB MODULAR CLEAN LABS

UNILAB MODULAR CLEAN LABS

UNILAB MODULAR CLEAN LABS

UNILAB MODULAR CLEAN LABS

UNILAB MODULAR CLEAN LABS



Electronics Modular Clean Lab, Class 1000, with airlock



Tissue Culture Modular Clean Lab, Class 10,000,



Hazardous Safety Modular Clean Lab, HEPA in-HEPA out

- Where critical levels of cleanliness must be maintained, HEMCO UniLab pre-engineered modular system offers a cost-effective alternative to conventional construction while providing quality, durability and modular clean lab performance.

- HEMCO UniLab Modular Clean Lab modulares are movable and expandable and to provide years of usability and versatility.

- HEMCO UniLab Modular Clean Lab wall systems can interface with the modular clean lab floor, ceiling and mechanical components to provide a clean workspace that maintains optimum airflow, pressure, temperature, humidity and cleanliness.

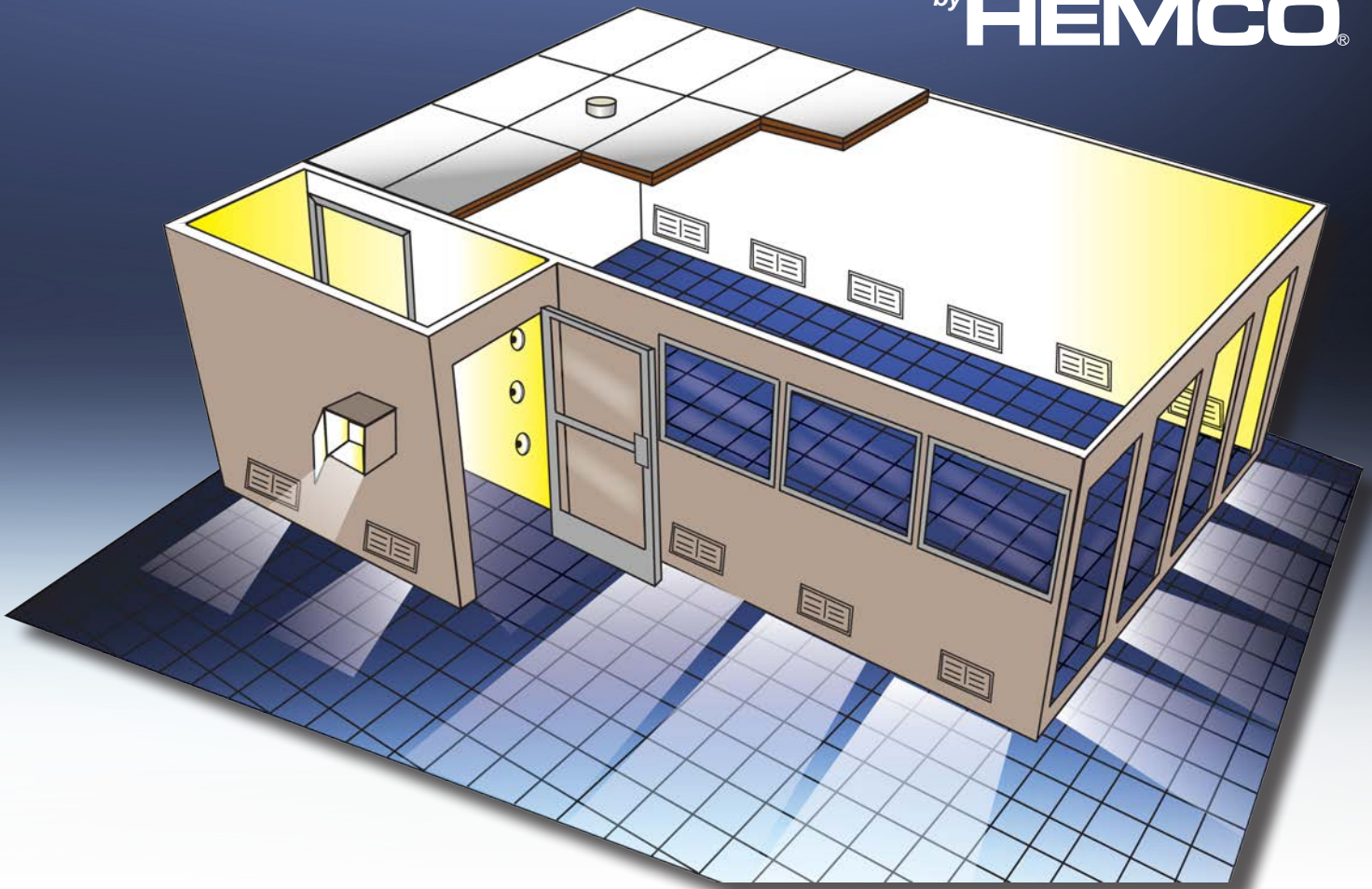
- HEMCO UniLab Modular Clean Labs can also be free standing structures, independent of the surrounding area. Rooms can be engineered to meet special size requirements.



Quality Control Laboratory

- At HEMCO, we understand your needs. Modular construction allows fast, easy installation as well as design flexibility to meet your changing needs without sacrificing quality.

- HEMCO UniLab Modular Clean Lab systems are built to your exact specifications to ensure optimal performance. Pre-engineered modular design minimizes construction costs and delays.



Clean Lab, Class 100, with airlock



**Weighing / Dispensing
Modular Clean Lab,
Class 10000, with filtered airlock**



Calibration Clean Lab

CONSTRUCTION FEATURES

- Wall and ceiling panels are chemical resistant, smooth and non-porous for easy cleaning and decontamination. Panel surfaces can be constructed of fiberglass, stainless steel, coated steel or aluminum.
- Convenient access to HEPA filters and lighting allows them to be serviced from inside the room.
- Special airlocks, gowning areas and pass-throughs can be designed into the modular clean lab.

CONCEPT TO COMPLETION

- HEMCO's experienced technical staff will gladly assist in the design and engineering of your clean room from concept to completion.
- Technical staff will work closely with you to answer questions or suggest solutions, helping to develop a modular clean lab to your exact specifications. Visit our website at www.hemcocorp.com to request a HEMCO Modular Clean Lab Specification Planner.

Quick Ship UniLab Modular Clean Labs

HEMCO UniLab Modular Clean Lab Room Structures are innovative, pre-engineered modular laboratory workspaces with HEPA filtered supply air, built to your exact process, size and design requirements, for ventilation and safety.



6' X 8' QC Lab w/base floor



8' X 12' Calibration Lab



10' X 16' Clean Lab

MODULAR HEPA CLEAN LABS AND APPLICATIONS

- **Industrial Quality Control Laboratory**
- **Hazardous Materials Testing**
- **CMM/Calibration Lab**
- **Controlled Environment Rooms**
- **Designated Control Rooms**
- **Additional Lab Space**

As technologies change, companies need facilities that can immediately be put into use or quickly adapt with a minimum amount of installation, time, and cost.

The UniLab Modular Clean Lab features a pre-engineered modular wall panel system that is a cost effective and time efficient alternative to traditional construction. It gives you a fully equipped, high quality enclosure that is easily expanded or relocated as needs change. Determine where the room should be located, assemble the ModuLab, connect services and start your process.

The UniLab Modular Clean Lab can fit a wide range of applications. Wall panel options are available to meet thermal, chemical resistance, sound, and fire control requirements. Room roof panels can offer load bearing capacity and suspended ceiling systems are available for pressurized overhead supply plenums.

Complete environmental control systems can be supplied to meet your precise specifications. Temperature, humidity, room pressure, and variable exhaust control packages are engineered into a convenient and versatile control panel.

UniLab Modular Clean Labs can be shipped knocked-down to fit through a standard doorway for easy on-site erection. If desired, it can be shipped pre-assembled for turnkey operation complete with laboratory fume hoods, furniture, and all component equipment to meet your laboratory requirements.

You can detail your specific requirement on our convenient specification planner. Request an Innovative Modular Labs and Rooms catalog at www.HEMCOcorp.com.



**HEPA Filtered,
Clean Rooms Class 100,000**

**Optional
Airlock Room**

SPECIFICATIONS

ROOM CONSTRUCTION FEATURES: wall panels are Class A and are mounted into a clear anodized aluminum framing. Standard wall panels are 48" w x 120" h x 3" thick and are constructed with a foam core sealed between 1/2" gypsum and surfaced with chemical resistant composite resin panels with smooth white finish. Available with optional Room.

T-GRID CEILING SYSTEM: 1-1/2" Aluminum ceiling grid with white painted finish positioned 8' above floor. Includes all connectors, suspension hardware to hang from corrugated steel roof deck.

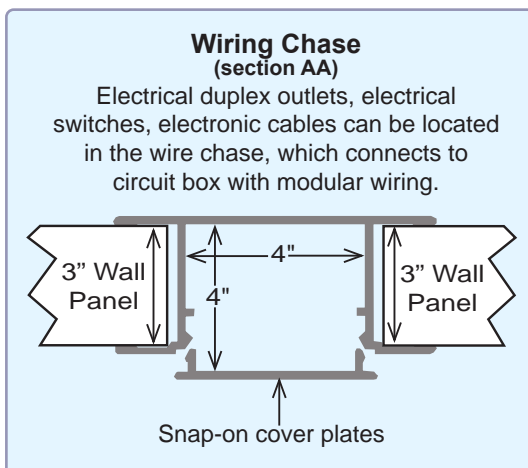
MYLAR CEILING PANELS: have sealed edges for spaces not occupied by fan filter units or light fixtures.

ENTRY DOOR: (1) 36" W X 80" H Door with viewing window, passage lever and hinges & lock.

WINDOWS: Nominal 46" W X 39" H, 1/4" tempered glass, mounted in an anodized aluminum frame. (optional windows can be added to meet your specs)

LIGHTING: LED 2' X 4' panel light fixtures, ceiling mount, 115V.

SINGLE-PASS DESIGN: Ambient surrounding air is drawn into the Clean Room Fan Filter Units at the ceiling level. The filtered air passes into the clean lab and is transferred out of the room through either the fume hood or general exhaust grills. Room is clean but under slight negative pressure.



HEPA FILTERED SUPPLY AIR: 2' X 4' Fan Filter units, Module features a 99.99% efficient @ 0.3 micron HEPA filter with, 90 FPM @ initial 0.47 w.g., 115v low watt A/C, 60Hz 1ph, includes prefilter, on/off/variable speed control, powder coated steel housing.

CLEAN AIR IN-LINE CARBON FILTRATION EXHAUST AIR: Filters are loaded with virgin coconut activated carbon to efficiently absorb organic solvents and acid fumes. The filter pak housing features a hinged access door with gaskets and spring latches for convenient filter changes.

EXHAUST BLOWERS: Standard (STD) belt drive steel blower and impeller wheel are epoxy coated for superior chemical resistance. Explosion-proof blowers (EXP) have epoxy coated, non-sparking aluminum impeller wheel. V-belt drive and adjustable pulleys permit field balancing.

Plan View Room #1 Cat. No. 80812 (12' X 8' X 10')

Room 1 includes: laboratory base cabinets, worksurfaces (black). Request a tech data sheet for room specifications. Maximum Occupancy 1-2 people.

Cat. No. 80812 Room #1 Description

12'w X 8'd x 10' h Modular Lab with 8' ceiling

Solid Walls are 3' thick with smooth PVC on 1/2" gypsum with rigid foam core

(1) Door shall be 3' W X 7' h, painted steel, hinged door, half glass

(2) LED flat panel light fixture 2' X 4', 115V with modular wiring 115V

(1) Filtration module, 2' X 4', with 99.99% efficient HEPA filter, prefilter integral fan and speed control 115V

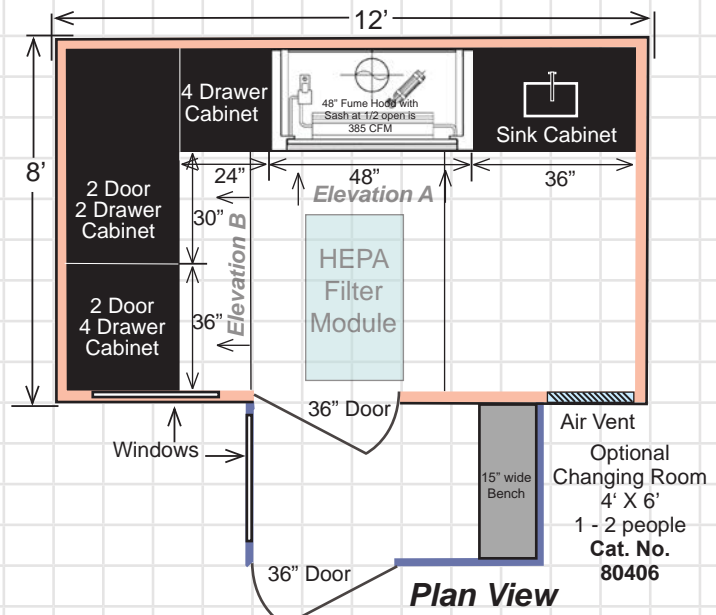
(2) Windows are 1/4" tempered glass

(4) Duplex receptacles and light switch with modular wiring

(1) Circuit box, 100 amp, 6 circuits with modular wiring

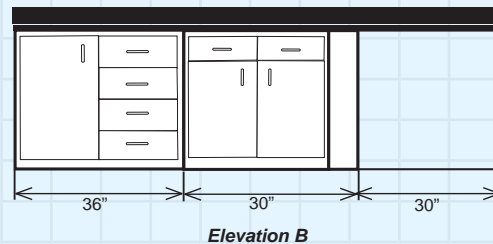
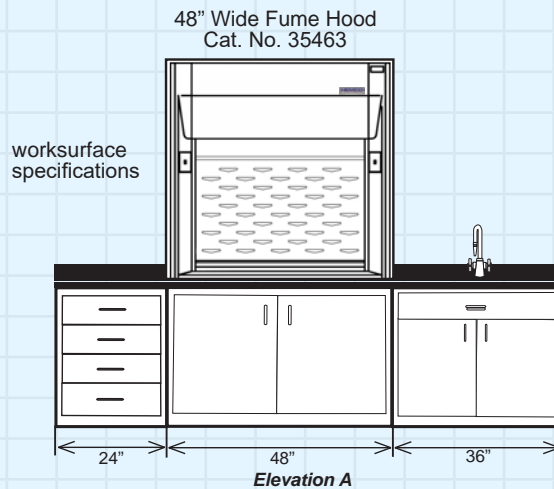
(2) Data (cabling not included)

(1) Changing Room, construction same as room construction except (1) additional LED light & switch



| Laboratory Furniture Specifications for Room #1 Cat.No.80812 | | |
|--|-----------------------------------|-----|
| Elevation A | | |
| Cat. No | Description | Qty |
| 35463 | 48" LE Fume Hood | 1 |
| 71222 | 24" 4 Drawer Cabinet | 1 |
| 54811 | 48" 2 Door Cabinet | 1 |
| 71812 | 36" Sink Unit | 1 |
| 50026 | Faucet | 1 |
| 42022 | Sink 16" X 12" | 1 |
| 70018B | Phenolic Worksurface & Backsplash | 1 |
| Elevation B | | |
| 71102 | 36" 4 Drawer 1 Door Cabinet | 1 |
| 71062 | 30" 2 Door 2 Drawer Cabinet | 1 |
| 70018B | Phenolic Worksurface & Backsplash | 1 |

Note: Exhaust Blowers and carbon filtration modules are available to safely exhaust and filter odors from the fume hood. Knowing the length of the ducting and the number of elbows in the duct run will enable us to properly size the blower and filter module to your specific requirement.



Elevation View of Laboratory Furniture Layout

Plan View Room #2 Cat. No. 81216 (16' X 12' X 10')

Room 2 includes: laboratory base cabinets, worksurfaces (black). Request a tech data sheet for room specifications. Maximum Occupancy 3-4 people.

Cat. No. 81216 Room #2 Description

16'w X 12'd x 10' h Modular Lab with 8' ceiling

Solid Walls are 3' thick with smooth PVC on 1/2" gypsum with rigid foam core

(1) Door shall be 3' W X 7' h, painted steel, hinged door, half glass

(2) LED flat panel light fixture 2' X 4', 115V with modular wiring 115V

(1) Filtration module, 2' X 4', with 99.99% efficient HEPA filter, prefilter integral fan and speed control 115V

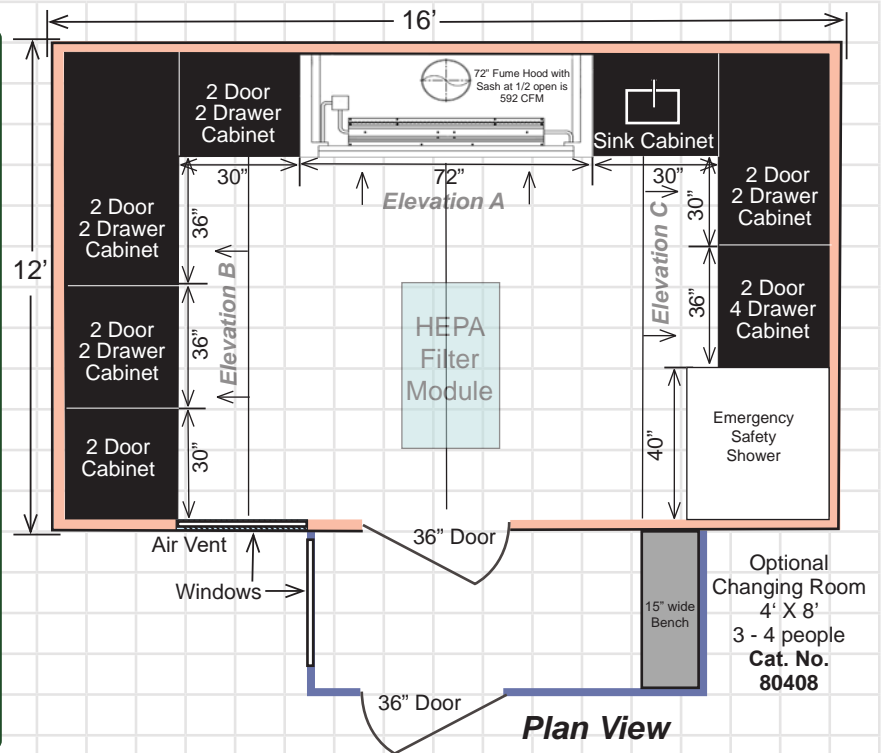
(2) Windows are 1/4" tempered glass

(6) Duplex receptacles and light switch with modular wiring

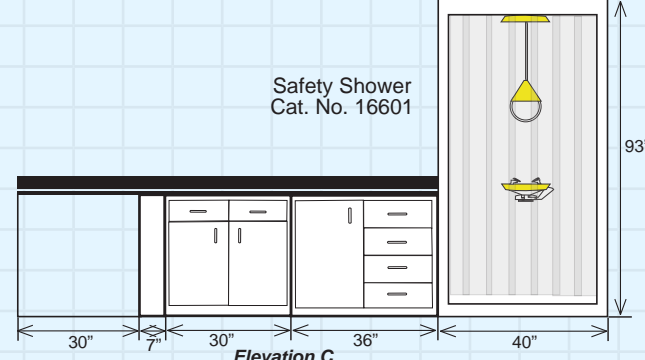
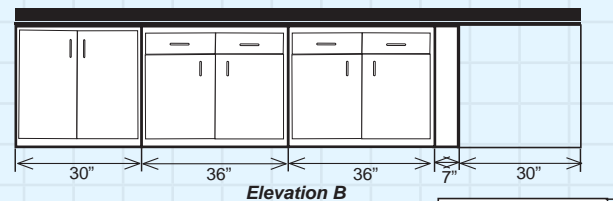
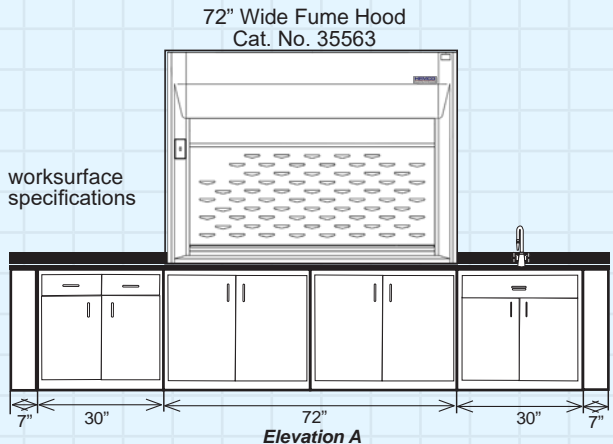
(1) Circuit box, 100 amp, 6 circuits with modular wiring

(2) Data (cabling not included)

(1) Changing Room, construction same as room construction except (1) additional LED light & switch



| Laboratory Furniture Specifications for Room #2 Cat.No.81216 | | |
|--|-----------------------------------|-----|
| Elevation A | | |
| Cat. No | Description | Qty |
| 35563 | 72" LE Fume Hood | 1 |
| 74112 | 7" Filler Panel | 2 |
| 71061 | 30" 2 Door 2 Drawer | 1 |
| 71062 | 36" 2 Door Cabinet | 2 |
| 71811 | 30" Sink Unit | 1 |
| 50026 | Faucet | 1 |
| 42022 | Sink 16" X 12" | 1 |
| 70018B | Phenolic Worksurface & Backsplash | 1 |
| Elevation B | | |
| 71062 | 30" 2 Door Cabinet | 1 |
| 71062 | 36" 2 Door 2 Drawer Cabinet | 2 |
| 74112 | 7" Filler Panel | 1 |
| 70018B | Phenolic Worksurface & Backsplash | 1 |
| Elevation C | | |
| 74112 | 7" Filler Panel | 1 |
| 71061 | 30" 2 Door 2 Drawer | 1 |
| 71102 | 36" 1 Door 4 Drawer | 1 |
| 70018B | Phenolic Worksurface & Backsplash | 1 |
| 16601 | 40" Safety Shower | 1 |



Note: Exhaust Blowers and carbon filtration modules are available to safely exhaust and filter odors from the fume hood. Knowing the length of the ducting and the number of elbows in the duct run will enable us to properly size the blower and filter module to your specific requirement.

Elevation View of Laboratory Furniture Layout

Plan View Room #3 Cat. No. 81624 (24' X 16' X 10')

Room 3 includes: laboratory base cabinets, worksurfaces (black). Request a tech data sheet for room specifications. Maximum Occupancy 5-7 people.

Cat. No. 81624 Room #3 Description

24'w X 16'd x 10' h Modular Lab with 8' ceiling

Solid Walls are 3' thick with smooth PVC on 1/2" gypsum with rigid foam core

(1) Door shall be 3' W X 7' h, painted steel, hinged door, half glass

(3) LED flat panel light fixture 2' X 4', 115V with modular wiring 115V

(2) Filtration modules, 2' X 4', with 99.99% efficient HEPA filter, prefilter integral fan and speed control 115V

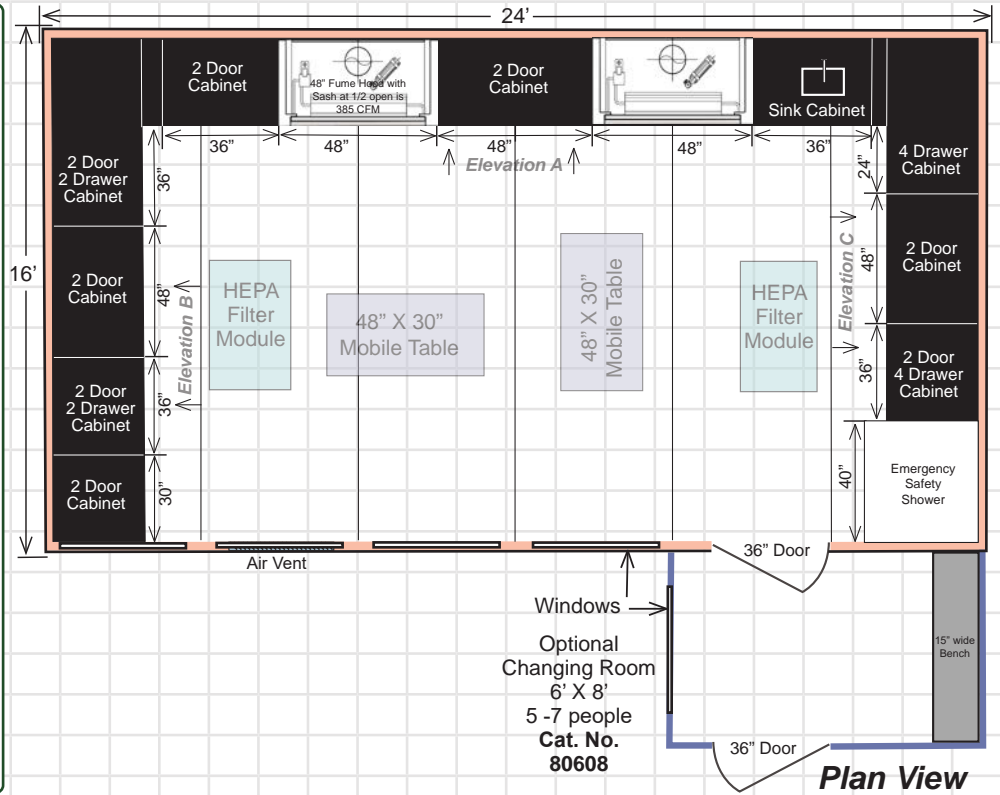
(4) Windows are 1/4" tempered glass

(10) Duplex receptacles and light switch with modular wiring

(1) Circuit box, 100 amp, 6 circuits with modular wiring

(2) Data (cabling not included)

(1) Changing Room construction same as room construction except
(1) additional LED light & switch



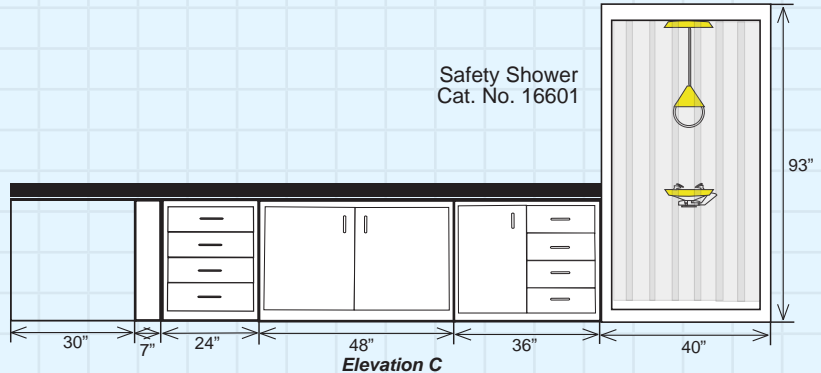
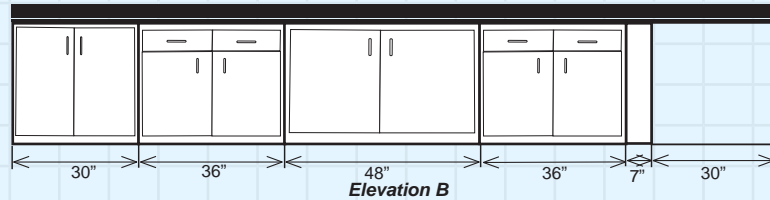
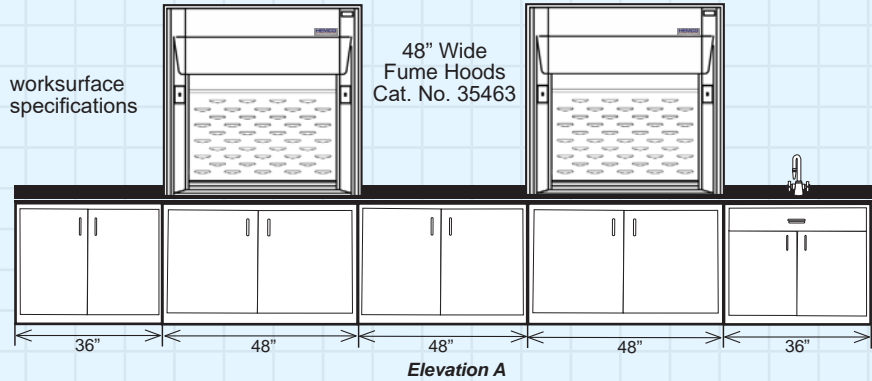
Laboratory Furniture Specifications for Room #3 Cat.No.81624

| Elevation A | | |
|-------------|-----------------------------------|-----|
| Cat. No | Description | Qty |
| 35463 | 48" LE Fume Hood | 2 |
| 71062 | 36" 2 Door Cabinet | 1 |
| 54811 | 48" 2 Door Cabinet | 3 |
| 71812 | 36" Sink Unit | 1 |
| 74112 | 7" Filler Panel | 1 |
| 50026 | Faucet | 1 |
| 42022 | Sink 16" X 12" | 1 |
| 70018B | Phenolic Worksurface & Backsplash | 1 |

| Elevation B | | |
|-------------|-----------------------------------|---|
| 71062 | 30" 2 Door Cabinet | 1 |
| 71062 | 36" 2 Door 2 Drawer Cabinet | 2 |
| 54811 | 48" 2 Door Cabinet | 1 |
| 74112 | 7" Filler Panel | 1 |
| 70018B | Phenolic Worksurface & Backsplash | 1 |

| Elevation C | | |
|-------------|-----------------------------------|---|
| 74112 | 7" Filler Panel | 1 |
| 71222 | 24" 4 Drawer | 1 |
| 54811 | 48" 2 Door Cabinet | 1 |
| 71062 | 36" 2 Door 2 Drawer Cabinet | 1 |
| 16604 | 40" Safety Shower | 1 |
| 70018B | Phenolic Worksurface & Backsplash | 1 |

Note: Exhaust Blowers and carbon filtration modules are available to safely exhaust and filter odors from the fume hood. Knowing the length of the ducting and the number of elbows in the duct run will enable us to properly size the blower and filter module to your specific requirement.



Elevation View of Laboratory Furniture Layout

UniFlow LE AireStream Laboratory Fume Hoods



UniFlow LE AireStream Hood Cat. No. 35663 shown with factory installed phenolic resin worksurface, base cabinet and fixtures.



High efficiency, full duty fume hood in 48" and 72" widths. UniFlow LE AireStream Fume Hoods are low flow constant volume for energy savings & maximum user protection. Requires Remote Exhaust Blower. Hood is U.L.1805 classified.

Phenolic Resin Worksurface 1 1/4" thick, dished, supplied and factory installed to bottom of hood.

| UniFlow LE AireStream Fume Hoods | | | |
|----------------------------------|-------|--------|----------|
| Width | Depth | Height | Cat. No. |
| 48" | 30" | 48" | 35463 |
| 60" | 30" | 48" | 35563 |
| 72" | 30" | 48" | 35663 |
| 96" | 30" | 48" | 35863 |

Optional sizes available to your specs.

VaraFlow Air Bypass low flow, constant air volume hood. Dual wall unitized construction, all non-metallic corrosion and fire resistant composite construction. Molded one-piece fume chamber with white glass-smooth surface with all covered corners.

Vector AireStream Baffle System and bell shaped exhaust collar.

Sash to be counterbalanced, 3/16" tempered safety glass with chemical resistant non-metallic PVC framing, track & aerodynamic sash lift.

Sash Stop at half open for energy efficiency and user protection. A sash stop is installed at the half open position.

28" Vertical Sash Height provides ease of access for apparatus set-up in fume chamber. Standard Sash. 32" Viewing Height interior fume chamber with 24" interior reach in depth.



Explosion-Proof Light Std Class I Div II For use in hazardous locations. Gray, two-coat epoxy finish with easily removed prismatic globe. Factory mounted, not wired. Accepts compact fluorescent or LED, (bulb not included) 115V /230V UL listed. Class I Div II Group A, B,C,D Class II Div II Group F& G



Optional Fire Extinguisher automatic activation at 165° Fahrenheit, With dry chemical for class ABC fires, 20 Square feet. **Cat No. 53020**

Fume Hood Base Cabinets



Base Cabinet Constructed of furniture grade steel. With adjustable shelf and levelers. Doors feature double wall construction. Standard depth is 22", standard height is 35". White powder coat finish.

| Width | Cat. No. |
|-------------------|----------|
| 30" | 53011 |
| 36" | 53611 |
| 48" | 54811 |
| Filler Panels (2) | 74112 |
| Door Lock | 75001 |



Acid Cabinet provides safe storage of acids. Molded furniture grade one piece chemical resistant, composite liner, covered corners, glass smooth for ease of cleaning. Standard depth is 22", standard height is 35". White powder coat finish.

| Width | Doors | Cat. No. |
|-------------------|-------|----------|
| 30" | 2 | 15300 |
| 36" | 2 | 15360 |
| 48" | 2 | 15480 |
| Vent Kit | --- | 81000 |
| Filler Panels (2) | | 74112 |
| Door Lock | | 75001 |



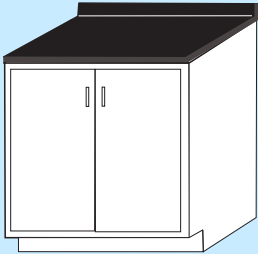
Flammable Cabinet provides safe storage of flammables. Constructed of welded double wall furniture grade steel. Standard depth is 22", standard height is 35". White powder coat finish. With locking handle.

| Width | Cat. No. |
|-------------------|----------|
| 30" | 18300 |
| 36" | 18030 |
| 48" | 18040 |
| Filler Panels (2) | 74112 |

When Flammable cabinets are vented it voids UL Listing. Sealed doors smother any flame.


Laboratory Base Cabinets & Worksurfaces

Lab cabinets are offered in standard modular sizes that allow you to create a custom laboratory to meet your specific needs. Cabinets feature furniture grade welded steel construction with a durable, chemical resistant, epoxy powder coat finish. **Base Cabinets (standard color: Lab White)**




2 Door

| Width | Depth | Cat. No. |
|-------|-------|----------|
| 30" | 22" | 53011 |
| 36" | 22" | 53611 |
| 48" | 22" | 54811 |




2 Drawer - 2 Door

| Width | Depth | Cat. No. |
|-------|-------|----------|
| 30" | 22" | 71061 |
| 36" | 22" | 71062 |
| 48" | 22" | 71064 |




4 Drawer - 1 Door

| Width | Depth | Cat. No. |
|-------|-------|----------|
| 30" | 22" | 71101 |
| 36" | 22" | 71102 |
| 48" | 22" | 71104 |



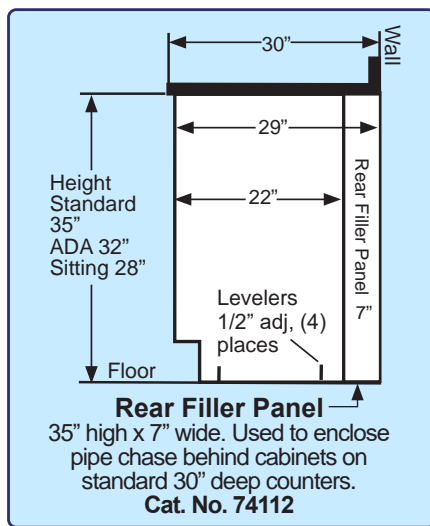

Sink Unit Cabinet

| Width | Depth | Cat. No. |
|-------|-------|----------|
| 30" | 22" | 71811 |
| 36" | 22" | 71812 |
| 48" | 22" | 71814 |



4 Drawer Cabinet

| Width | Depth | Cat. No. |
|-------|-------|----------|
| 18" | 22" | 71221 |
| 24" | 22" | 71222 |

Standard Lab Bench Stands
with 1" Phenolic Resin worksurface

| Mobile Table (Height adjustable 30", 32", 36"H) | | |
|---|-------|---------|
| Width | Depth | Cat.No. |
| 48" | 30" | 54812 |
| 72" | 30" | 57212 |

UniLine Laboratory Casework Construction

UniLine Casework is constructed of welded 18 gauge steel. Base cabinets have a load capacity of 500 pounds per linear foot. Powder coat finish is environment friendly, attractive and long lasting, color: Lab White. UniLine casework, quality & style for your laboratory.




48" Cabinet shown
Cat. No. 71064

Rear Filler Panel
Cat. No. 74112

Drawers extend to 18" full open, Interchangeable, interlocking drawer head, sound deadened for quiet operation. One piece drawer body with radiused bottom for easy cleaning. 150 pound dynamic drawer slide assembly mounted on welded channel assemblies. Interior is powder coated steel, stainless steel interior is optional.

Doors One-piece double wall construction painted before assembly. Insulated door filler for added rigidity and quiet operation. Rubber door bumpers. Powder coated finish.

Cabinet Interior Minimal holes in front post for aesthetically pleasing appearance. Hem and flatten door. Adjustable shelves heavy duty stop for secure closure. Full length & width adjustable shelf for maximum storage. Unique triangular support rails for added strength. Heavy duty plated steel shelf clips. Powder coated finish. Cabinet interior bottom with a radius flange for increased strength and ease of cleaning.

Recessed Toe Space 4 inches high 3-1/2 inches deep, promotes laboratory cleanliness. Cabinet base lower corner reinforcing gusset with 0 to 2-1/2" adjusting levelers on (all four corners). Cabinet height adjustable from 35" to 37".

Laboratory Furniture Groupings

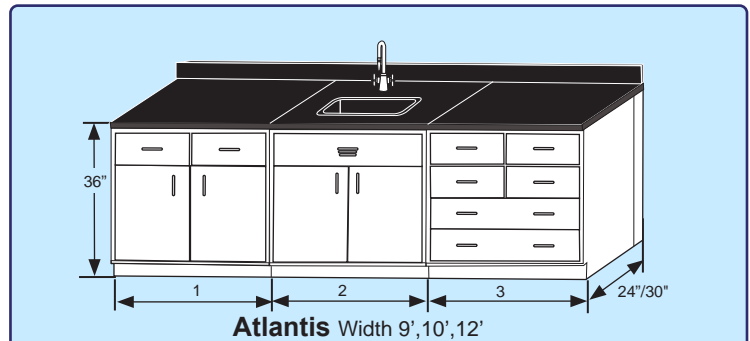
UniLine design incorporates our most popular casework groupings to meet your laboratory needs. Welded steel with chemical resistant, epoxy powder coat finish, and 1" thick phenolic resin countertops, 4" high backsplashes, and flush ends standard. Standard height 36", ADA height 34", and sitting height 28" options are available. Standard color: Lab White. (Or color to your spec) Groupings can be supplied with optional Fume hoods.

Atlantis Grouping

Atlantis Grouping provides basic lab storage & a versatile work area. Cabinet grouping includes 3 standing height cabinets with rear filler panels on both ends, phenolic resin worksurface 36" high, with 4" high back splash. Includes 16" X 12" X 8" sink and H/C gooseneck faucet.

Atlantis Cabinet Grouping

| Width | 1 | 2 | 3 | 24" Depth Cat. No. | 30" Depth Cat. No. |
|-------|-----|-----|-----|--------------------|--------------------|
| 9' | 36" | 36" | 36" | 70011 | 70021 |
| 10' | 48" | 36" | 36" | 70012 | 70022 |
| 12' | 48" | 48" | 48" | 70013 | 70023 |

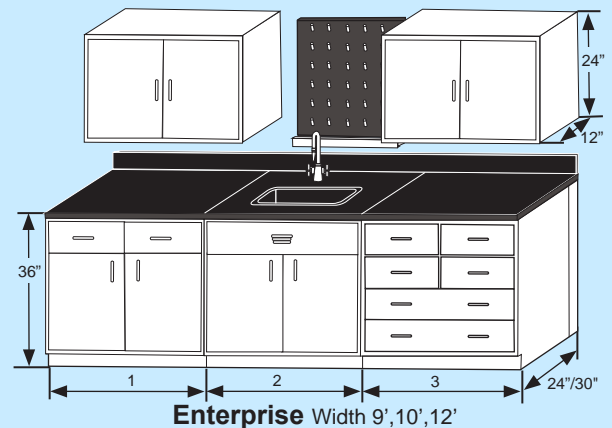


Enterprise Grouping

Enterprise Grouping provides a convenient balance of storage and work space. Cabinet grouping includes 3 standing height cabinets with rear filler panels, 2 wall cabinets, phenolic resin worksurface 36" high, with 4" high back splash. Includes 16" X 12" X 8" sink, 30" X 30" pegboard and H/C gooseneck faucet.

Enterprise Cabinet Grouping

| Width | 1 | 2 | 3 | 24" Depth Cat. No. | 30" Depth Cat. No. |
|-------|-----|-----|-----|--------------------|--------------------|
| 9' | 36" | 36" | 36" | 70211 | 70221 |
| 10' | 36" | 48" | 36" | 70212 | 70222 |
| 12' | 48" | 48" | 48" | 70213 | 70223 |

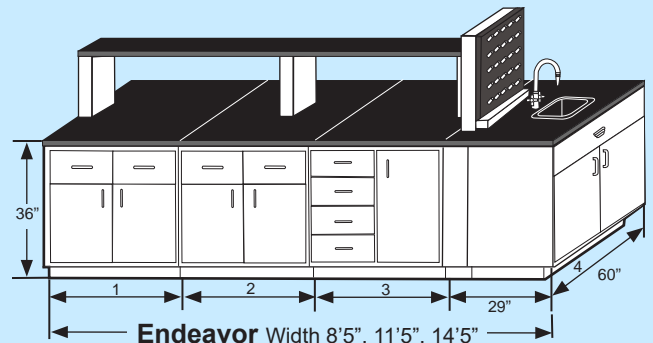


Endeavour Island Grouping

Endeavour Grouping is a flexible design that can serve as an island or peninsula layout. Cabinet grouping includes either 3 or 7 standing height cabinets with front and end filler panels, phenolic resin worksurface, and center island reagent shelf with pedestals and phenolic resin shelf. Includes 16" X 12" X 8" sink, 30" X 30" pegboard and H/C gooseneck faucet.

Endeavor Cabinet Grouping

| Width | 1 | 2 | 3 | 4 | Cat. No. |
|-------|-----|-----|-----|-----|----------|
| 8'5" | 36" | 36" | — | 60" | 71311 |
| 11'5" | 36" | 36" | 36" | 60" | 71312 |
| 14'5" | 48" | 48" | 48" | 60" | 71313 |



Viking/Magellan Grouping

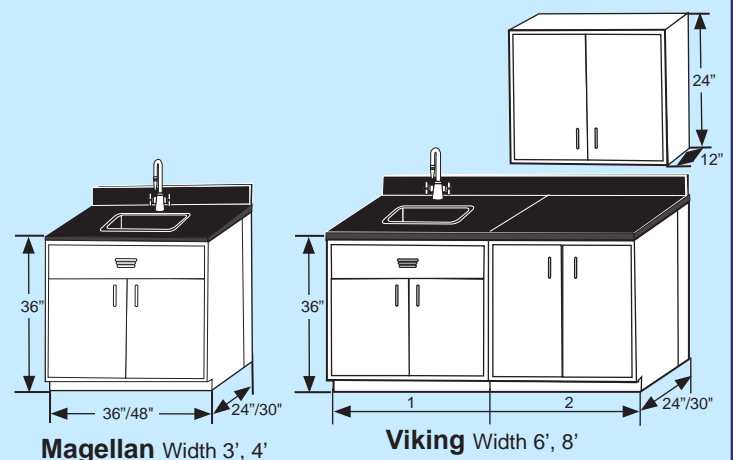
Viking Grouping is ideal for medical examination rooms and small lab requirements. Cabinet grouping includes 1 or 2 standing height cabinets, 1 wall cabinet 36" or 48" wide, 24" high 12" deep, phenolic resin worksurface. Includes 16" X 12" X 8" sink and H/C gooseneck faucet.

Viking Cabinet Grouping

| Width | 1 | 2 | 24" Depth Cat. No. | 30" Depth Cat. No. |
|-------|-----|-----|--------------------|--------------------|
| 6' | 36" | 36" | 70413 | 70423 |
| 8' | 48" | 48" | 70414 | 70424 |

Magellan Sink Cabinet Grouping

| Width | 1 | 24" Depth Cat. No. | 30" Depth Cat. No. |
|-------|-----|--------------------|--------------------|
| 36" | 36" | 70611 | 70621 |
| 48" | 48" | 70612 | 70622 |



UniLine Furniture Groupings

Unitized design incorporates our most popular casework groupings to meet your laboratory needs. Welded steel with chemical resistant, epoxy powder coat finish, and 1" thick phenolic resin countertops, 4" high backsplashes, and flush ends standard. ADA height 34" Max, and sitting height 28", options are available. Standard color: Lab White
 For ADA technical information, including dimensions and standards, visit: www.access-board.gov.

Pioneer Grouping

UniLine Pioneer Grouping combines typical lab storage and a fume hood. Cabinet grouping includes (4) 36" high cabinets, phenolic resin worksurface, with 4" high back splash. Includes 16" X 12" X 8" sink and H/C gooseneck faucet. UniFlow CE included on 24" deep models in widths of 36" & 48".

| Pioneer Cabinet Grouping | | | | | |
|--------------------------|-----|-----|-----|-----|-------------------------------------|
| Length | 1 | 2 | 3 | 4 | 24" Depth Cat. No. Includes CE hood |
| 144" | 36" | 36" | 36" | 36" | 70811 |
| 192" | 48" | 48" | 48" | 48" | 70812 |

Apollo Grouping

UniLine Apollo Grouping combines typical lab storage and a fume hood. Cabinet grouping includes (4) 36" high cabinets with rear filler panels on both ends, phenolic resin worksurface, with 4" high back splash. Includes 16" X 12" X 8" sink, H/C gooseneck faucet and pegboard. UniFlow SE Fume Hood included on 30" deep models in widths of 48" & 72".

| Apollo Cabinet Grouping | | | | | |
|-------------------------|-----|-----|-----|-----|--|
| Length | 1 | 2 | 3 | 4 | 30" Depth Cat. No. Includes SE Fume hood |
| 144" | 36" | 48" | 36" | 36" | 70830 |
| 156" | 36" | 48" | 48" | 36" | 70831 |
| 192" | 48" | 48" | 48" | 48" | 70832 |
| 216" | 48" | 48" | 72" | 48" | 70833 |

Mariner Grouping

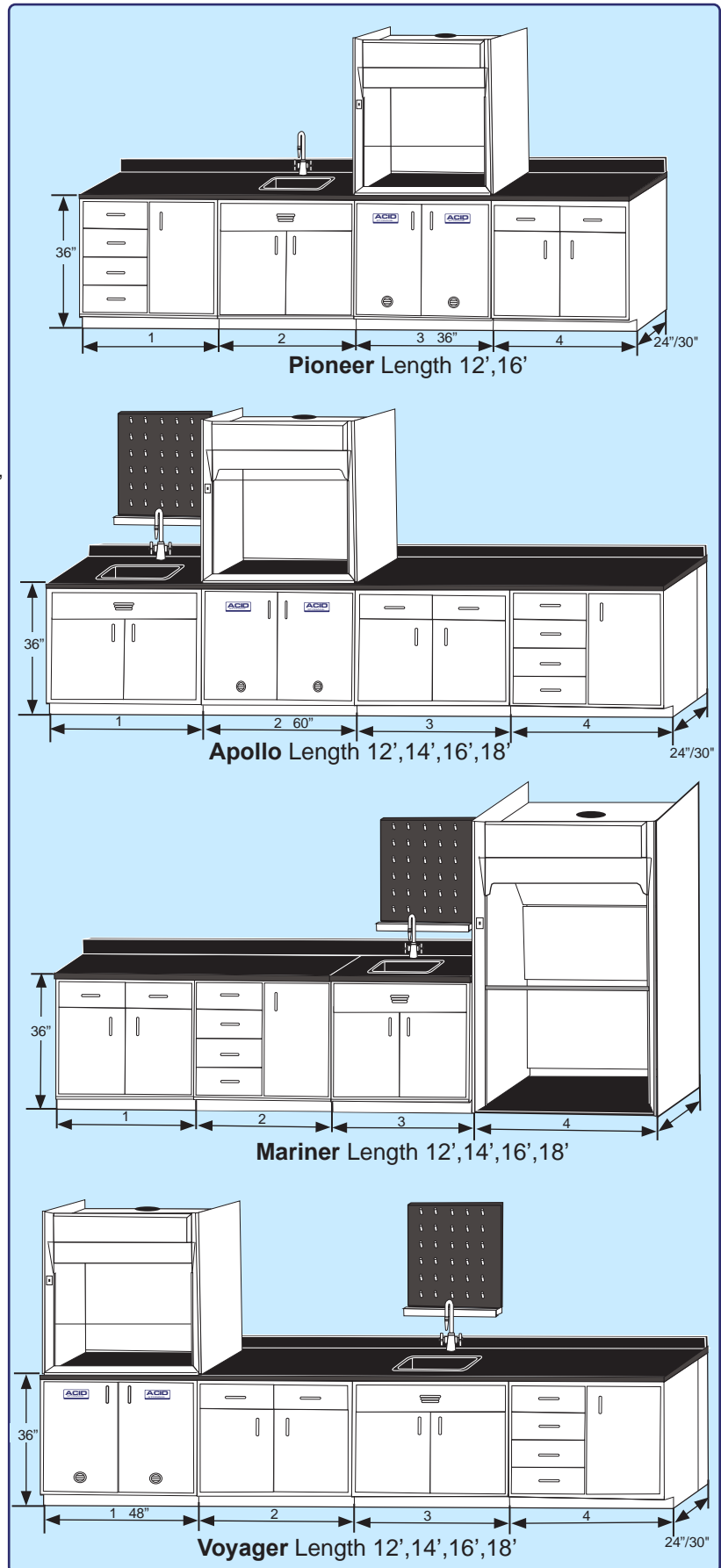
UniLine Mariner Grouping accommodates larger procedures in the FM floor mount fume hood combined with convenient cabinet storage. Grouping includes (3) cabinets 36" high, phenolic resin worksurface with 4" high backsplash, 16" X 12" X 8" sink, H/C gooseneck faucet and pegboard. UniFlow FM included 72" wide.

| Mariner Cabinet Grouping | | | | | |
|--------------------------|-----|-----|-----|-----|--------------------|
| Length | 1 | 2 | 3 | 4 | 30" Depth Cat. No. |
| 180" | 36" | 36" | 36" | 72" | 70711 |
| 216" | 48" | 48" | 48" | 72" | 70721 |

Voyager Grouping

UniLine Voyager Grouping combines typical lab storage and a fume hood. Cabinet grouping includes (4) 36" high cabinets with rear filler panels on both ends, phenolic resin worksurface, with 4" high back splash. Includes 16" X 12" X 8" sink, H/C gooseneck faucet and pegboard. UniFlow LE Fume Hood included on 30" deep models in widths of 36" & 48".

| Voyager Cabinet Grouping | | | | | |
|--------------------------|-----|-----|-----|-----|-------------------------------------|
| Length | 1 | 2 | 3 | 4 | 30" Depth Cat. No. Includes LE hood |
| 108" | 36" | 36" | 36" | -- | 70821 |
| 144" | 36" | 36" | 36" | 36" | 70822 |
| 192" | 48" | 48" | 48" | 48" | 70823 |



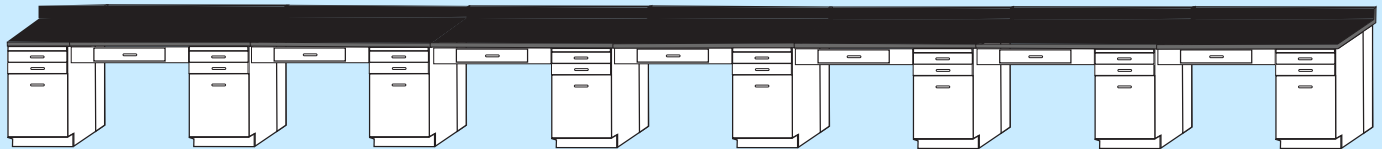
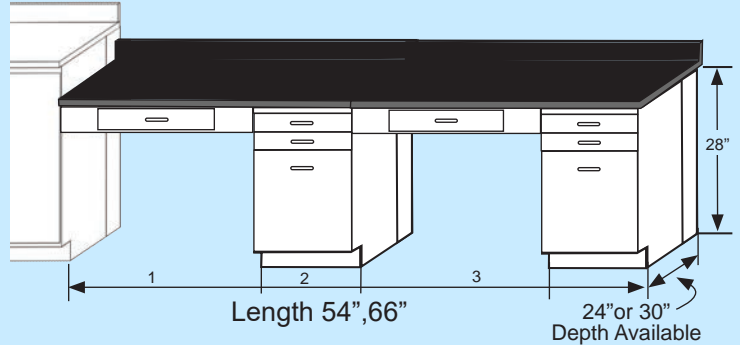
UniLine Furniture Groupings

Unitized design incorporates our most popular casework groupings to meet your laboratory needs. Welded steel with chemical resistant, epoxy powder coat finish, and 1" thick phenolic resin countertops, 4" high backsplashes, and flush ends standard. ADA and sitting height options are available. Standard color: lab white

Gemini Grouping

UniLine Gemini grouping features a sitting height desk area that can be incorporated with any of the HEMCO groupings. Cabinet grouping includes 1 sitting height file drawer cabinet with rear filler panels, single drawer apron, and phenolic resin worksurface. Sitting height 28". Lay out a Lab Space.

| Length | 1 | 2 | 24" Depth Cat. No. | 30" Depth Cat. No. |
|--------|-----|-----|--------------------|--------------------|
| 4' | 30" | 18" | 70501 | 70521 |
| 4'6" | 36" | 18" | 70502 | 70522 |
| 5'6" | 48" | 18" | 70503 | 70523 |



Example of (7) Gemini Groupings

ADA

Freedom (ADA) Grouping Option

When ADA requirements are necessary, the UniLine Freedom Grouping option allows you specify any HEMCO casework grouping and be compliant to all dimension, space, and access standards as specified by ADA. In addition, all electrical services, plumbing accessories and safety equipment including emergency showers and eye wash stations are designed to meet ADA guidelines. Counter top height is 34". For ADA recommended reach see diagram 1 and 2.

Simply add "ADA" as a suffix to any HEMCO part number and HEMCO can design, quote, and supply ADA compliant equipment. Proper planning eliminates/reduces future problems. For a complete guide for all ADA technical information, including dimensions and standards, please visit: www.access-board.gov.

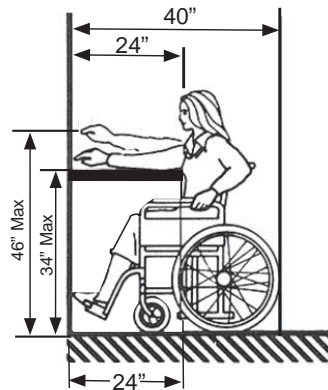


Diagram #1
Reach In

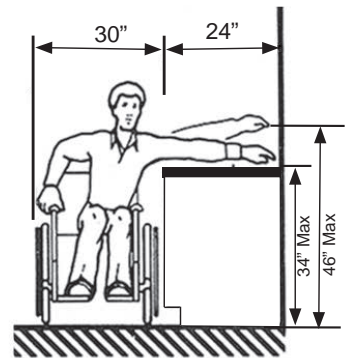
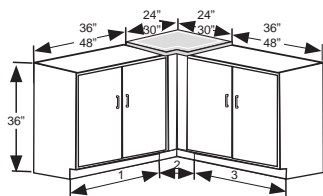


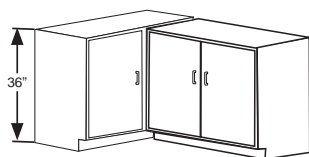
Diagram #2
Reach Over

Corner Grouping Solutions

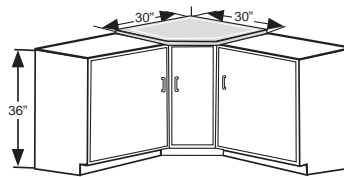
HEMCO corner cabinets and fillers offer several means by which HEMCO casework groupings or individual cabinets can be connected at a corner, eliminating unused corner space.



Basic Corner Scribe with worksurface
2" Cat. No. 74002



Overlap Corner Cabinet
36" Cat. No. 71981
48" Cat. No. 71983



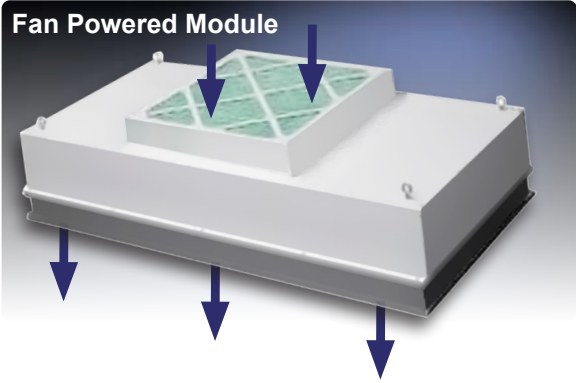
Spacious Corner Cabinet with worksurface
Cat. No. 71901

Corner Canopy



Corner Canopy Hoods

HEPA Filtered Air Module supplies air into Testing laboratories



- Module features a 99.99% efficient @ 0.3 micron HEPA filter with, 90 FPM @ initial 0.47 w.g., 115v low watt A/C, 60Hz 1ph, includes prefilter, on/off/variable speed control, powder coated steel housing.
- HEPA filters can be changed from inside the enclosure, without removing the unit from the ceiling, can be ordered with optional integral lighting. Available with Magnehelic gauge **Cat. No. 51301**

| Size | With out lights |
|-----------|-----------------|
| 24" X 48" | 50324 |

Filter units feature an upstream gel channel on the final filter which provides a leak-free seal between the filter and the housing.

Replacement Filters

| | Cat. No. |
|--|--------------|
| Prefilter, 30% efficient 20" X 20" X 1" | 52190 |
| HEPA filter 99.99% efficient (Inside Replaceable) (for 24" X 48" module) | 52200 |

Clean Aire In-Line Carbon Filtration Exhaust Systems for capturing Cannabis odors

Note: HEMCO recommends a minihelic or magnehelic gauge to monitor the air flow differential across the filter. The static pressure indicated would alert when to change filter. The gauges can be hood or filter mounted. We recommend ordering a back-up replacement filter. Designed to clean up fume hood exhaust fumes. Carbon filtration removes unwanted odors & vapors. Select your fume hood exhaust blower from the chart below.

In-Line Carbon Filter Pak



Clean Aire Carbon Filter Pak

| CFM | Size | Duct Size | Cat. No. |
|----------|---------------------|-----------------------|--------------|
| 250-650 | 26" x 15" x 35 1/2" | 4", 8" diameter | 50297 |
| 650-1200 | 26" x 26" x 35 1/2" | 8", 10", 12" diameter | 50298 |

| Carbon Filters | | | Prefilter (6 per carton) | | |
|----------------|-----------------|--------------|--------------------------|----------------|--------------|
| CFM | Size | Cat. No. | CFM | Size | Cat. No. |
| 500 | 24" x 12" x 12" | 52100 | 500 | 24" x 12" x 2" | 52000 |
| 1000 | 24" x 24" x 12" | 52101 | 1000 | 24" x 24" x 2" | 52001 |

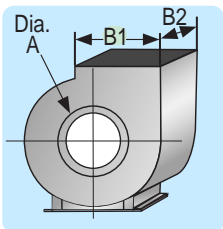
Fume Hood Epoxy Coated Steel Belt Drive Exhaust Blowers



Standard (STD) belt drive steel blower and impeller wheel are epoxy coated for superior chemical resistance. Explosion-proof blowers (EXP) have epoxy coated, non-sparking aluminum impeller wheel. V-belt drive and adjustable pulleys permit field balancing. Seven discharge positions to suit installation. Weather housing is furnished. Motor has thermal overload protection. Specify: 115V single phase, 230V single phase, 230/460V three phase or 208V(consult factory). 1 year manufacturer's warranty

Catalog Number and Static Pressure

| CFM | A Inlet Dia | B1 Outlet Size | B2 Outlet Size | 1/2" Static Pressure | | | 3/4" Static Pressure | | | 1" Static Pressure | | | 1 1/2" Static Pressure | | |
|------|-------------------|----------------------|----------------------|----------------------|--------------|--------------|----------------------|--------------|--------------|--------------------|--------------|--------------|------------------------|--------------|--------------|
| | | | | HP | STD | EXP | HP | STD | EXP | HP | STD | EXP | HP | STD | EXP |
| | | | | 296 | 8 7/8" | 10 1/8" | 4 1/8" | 1/4 | 51701 | 51801 | 1/4 | 51702 | 51802 | 1/4 | 51703 |
| 800 | 8 7/8" | 10 1/8" | 6 3/8" | 1/2 | 51713 | 51813 | 1/2 | 51714 | 51814 | 1/2 | 51715 | 51815 | 3/4 | 51716 | 51816 |
| 914 | 9 7/8" | 11 1/2" | 8 1/4" | 1/2 | 51717 | 51817 | 1/2 | 51718 | 51818 | — | — | — | — | — | — |
| 1240 | 9 7/8" | 11 1/2" | 8 1/4" | 1/2 | 51725 | 51825 | 1/2 | 51726 | 51826 | 3/4 | 51727 | 51827 | 3/4 | 51728 | 51828 |
| 1771 | 11 7/8" | 13 3/8" | 8 1/4" | 1/2 | 51734 | 51834 | 3/4 | 51735 | 51835 | 3/4 | 51736 | 51836 | 1 | 51737 | 51837 |



Laboratory Emergency / Shower Decontamination Booths

Full body emergency shower & eye / face wash, both with immediate response activation handle.

Durable one-piece seamless fiberglass construction with glass smooth white surfaces and covered corners for ease of clean-up.

Emergency showers available with translucent frosted strip curtains, which provides for easy access into booth, while containing contaminated water splash.

Stainless steel Grab bars located on right & left sides to support victim and rescue personnel during decontamination, included.

Plumbing is provided, for installation by local certified plumber. Plumbed to single point 1.25" IPT. connection. Tempered warm water supply connection 20 GPM water supply is required.

Raised fiberglass deck with self draining containment basin, and 2" diameter drain outlet located on either the bottom or rear of unit.

Industrial Applications
Emergency Drench Shower Booth
 unit is equipped with pull rod activated overhead drench shower and rear wall mounted eye/face wash.
Cat No. 16601

Laboratory Applications
Emergency Drench Shower Booth
 same specs as above except with finished exterior side panels.
Cat No. 16604



Cat. No. 16601
 For Industrial Applications
 shown above

Note: OSHA & ANSI require that emergency shower is to be located within 10 seconds walking time from the hazardous site location.



Alarm Horn & Light
 Audible warning sound when system is activated by flow switch. Top mounted visual warning light when system is activated.
Cat. No. 16680



Overhead Drench Shower
 Shower unit features 10" diameter plastic head and 1" IPS brass "stay open" valve with rigid pull rod and handle.
Cat. No. 16088



Eye/Face Wash
 Wall mounting unit features two large plastic heads, push plate operated "stay open" ball valve. 1/2" IPS inlet, and 1.25" IPS drain.
Cat. No. 16006

Eye and Face Wash Options

Hand Held Body Wash
 Squeeze valve nozzle on 8' coiled hose and bracket. Can be used to rinse all body parts while victim is sitting or lying down. Wall or hood mounted, 3/8 NPT, barrier free.
Cat No. 16005

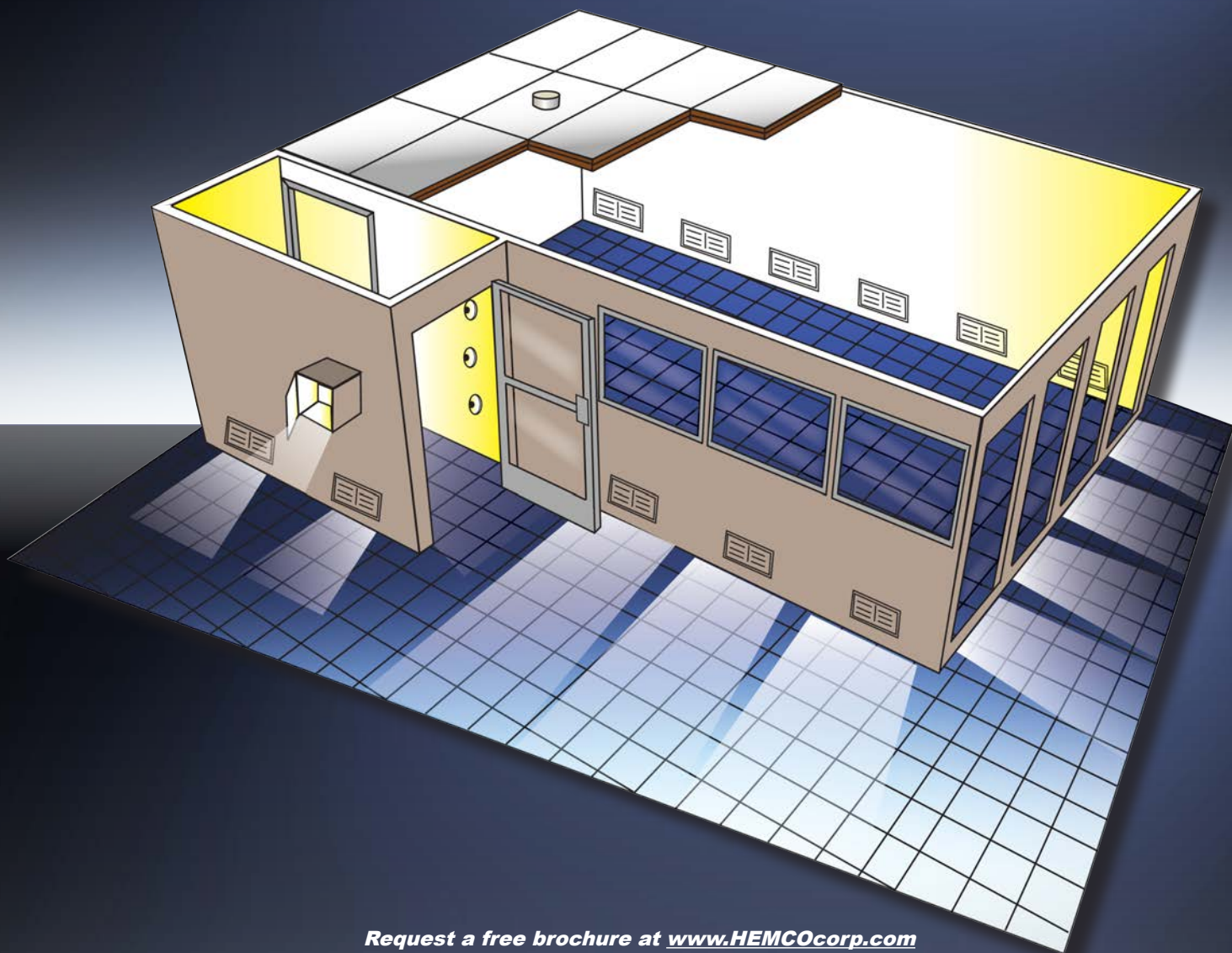


Swing-Out Eye Wash
 Deck mounted next to sink. Activates when pivoted. 1/2" NPT. Barrier free.
Cat. No. 16009



Hand Held Eye/Face & Body Wash
 Mounted on the front side-wall of the fume hood. Includes 8' hose and surface escutcheon. 3/8" NPT. barrier free.
Cat. No. 93966

MODULAR LABS & CLEANROOMS



Request a free brochure at www.HEMCOcorp.com
and browse the entire selection of HEMCO Laboratory Equipment



EnviroMax Enclosures for
Robotic and Automated
Lab Processes



Laboratory Planning
Solutions Complete
Planning Guide



UniFlow Laboratory
Fume Hoods
Brochure



UniMax Large
Floor Mount Walk-In
Fume Hoods Brochure



HEMCO Corporation
711 S. Powell Road
Independence, MO 64056
MCL-03.20



HEMCO
ISO 9001:2015 Certified Company

Specify UNILAB Modular Clean Labs
on Your Next Lab Project

Phone (816) 796-2900
Fax (816) 796-3333
www.HEMCOcorp.com